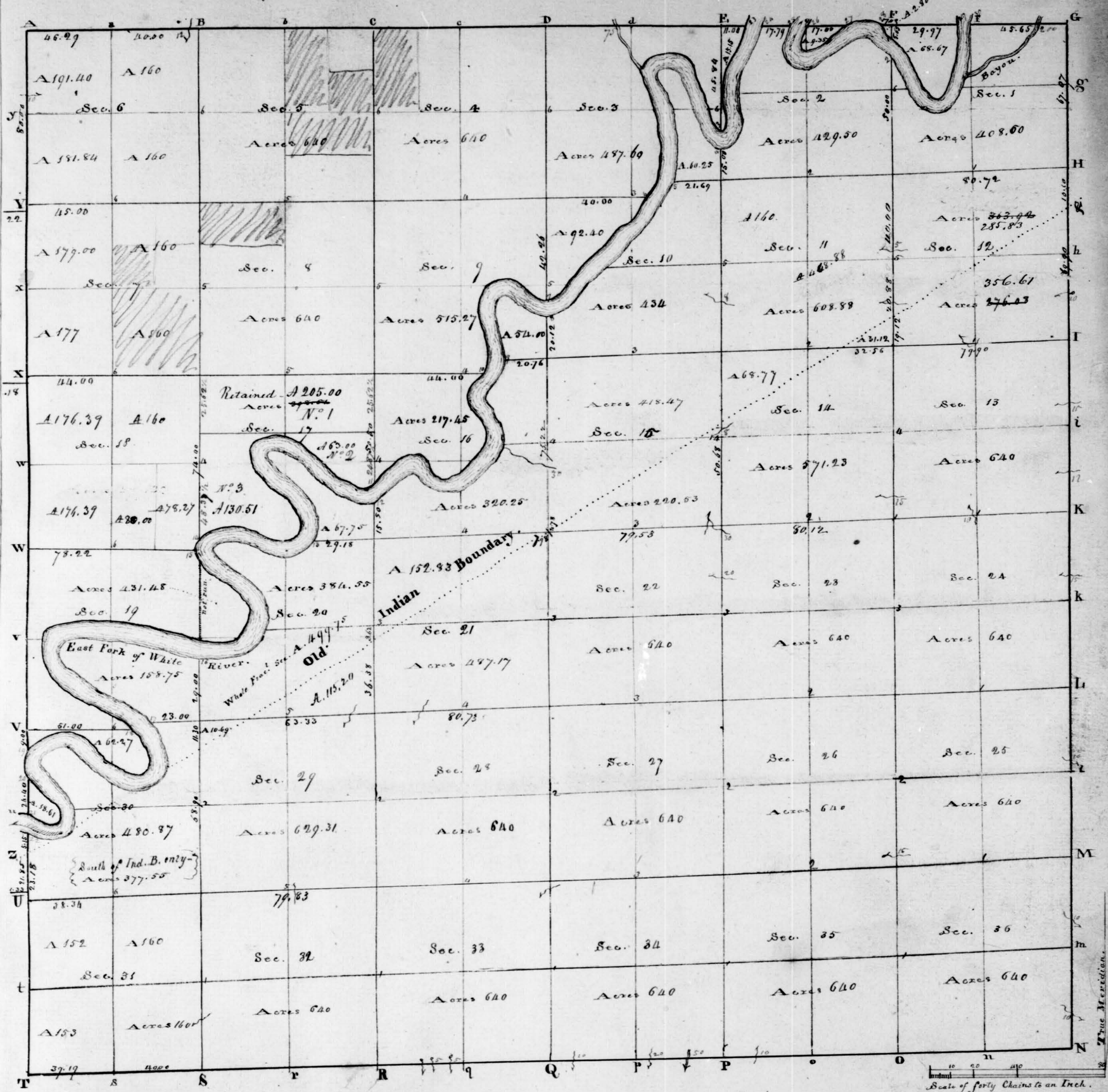


The South face of Sec. 12. was recalculated by instructions from the Commr. of the Genl. Land Office
of June 11th 1834 & contains 356.61 acres, & the North face contains 285.83 acres.



Township N. V. north, Range N. IV East of the 2nd Meridian. Surveyed by W. Harris 1807 & A. Henrie, 1834

Description of the Quality of the Soil on the interior Sectional Lines.

Between Sections	Quality &c	Between Sections	Quality &c	Between Sections	Quality &c
35.36	Hilly 2 nd rate	33.34	Hilly & poor	4.9	Land level; Oak & hickory
28.38	Same	27.24	Same	4.5	Same
25.26	Same	27.28	Same	31.32	Level good wheat land; Oak & hickory.
24.25	Same	22.27	Same	29.32	Same
23.24	Same	22.28	South half same, the North half	29.30	1 st rate farming land. bottom
13.24	Rolling; good farming land; Buck, sugar.	21.22	Rolling 1 st rate farming land	20.29	Same
13.16	Same - 1 st rate	15.22	Same	19.20	Rich & level
12.13	Same	15.26	Rich; Buck, Oak & poplar Wg. Spice	17.20	Same
11.14	Rolling good farming land; Buck, Sugar &c	10.15	Same	17.18	Same; buck ash &c
1.12	Level Rich; Buck, poplar, Oak, & hickory.	9.10	Same	8.17	Same
1.2	Same.	8.10	Same	7.8	Flat, most of it runs flows
34.35	Up a small brook bottom; hills high & steep.	3.14	Rich & level.	5.8	Flat, Elm, ash, maple
26.35	Hilly & poor.	32.33	Good wheat land; Oak hickory, poplar &c	5.6	Same
26.27	Same	28.33	Same.	6.7	Level; buck, ash, walnut
23.26	Same	28.29	Same.	7.18	Same
22.23	5 th Wg. poor; N & bottom	21.28	Rolling, good farming land; Oak, buck, sugar.	18.19	Same
14.23	Creek bottom - good farming land.	20.21	Level good farming land; Buck, Sugar &c	19.30	Rich & level
14.15	Land Rich; Buck Oak & poplar, Wg. Spice	16.21	Same.	30.31	Bottom; 1 st rate farming land
11.14	Rolling good farming land	16.17	Same		
10.11	Rich; Buck Oak & poplar Wg. Spice	9.16	Rich; Buck, Oak & poplar; Wg. Spice		
2.11	Same	8.9	Level rich & level		
3.3	Same				



Office of the Monroe County Surveyor
Trohn Enright-Randolph

Health Services Building
119 West 7th Street
Bloomington, IN 47404
Phone: (812) 349-2570

Dear User,

The following images were obtained in 2017 by the Office of the Monroe County Surveyor from the State Imaging and Microfilm Laboratory at the Indiana State Archives. The field notes and plats for Jackson County are stored on microfilm Reel 7545 at the Indiana State Archives. Each page provided by the State Imaging and Microfilm Laboratory is approximately 18MB. Our office combined the pages by Township & Range and reduced the resulting pdfs. This process may have caused some degradation in quality. We will provide unreduced images of specific pages if required. Please contact us at 812-349-2570 or at SurveyorsOffice@co.monroe.in.us to request a higher quality image of any specific page.

The pdfs are bookmarked with the original page numbers as assigned by the State Imaging and Microfilm Laboratory.

Be prepared to provide the county name, reel number, and the required page numbers when requesting full sized images.

If you would like a DVD of an entire county, please provide us with one DVD per county along with a self-addressed, stamped envelope.

Trohn Enright-Randolph
Monroe County Surveyor